



ABM 1 Manchester 2007

Job planning – updated results

Presented by SCTS GB&I Ltd

Prepared for SCTS by SCTS GB&I Ltd.

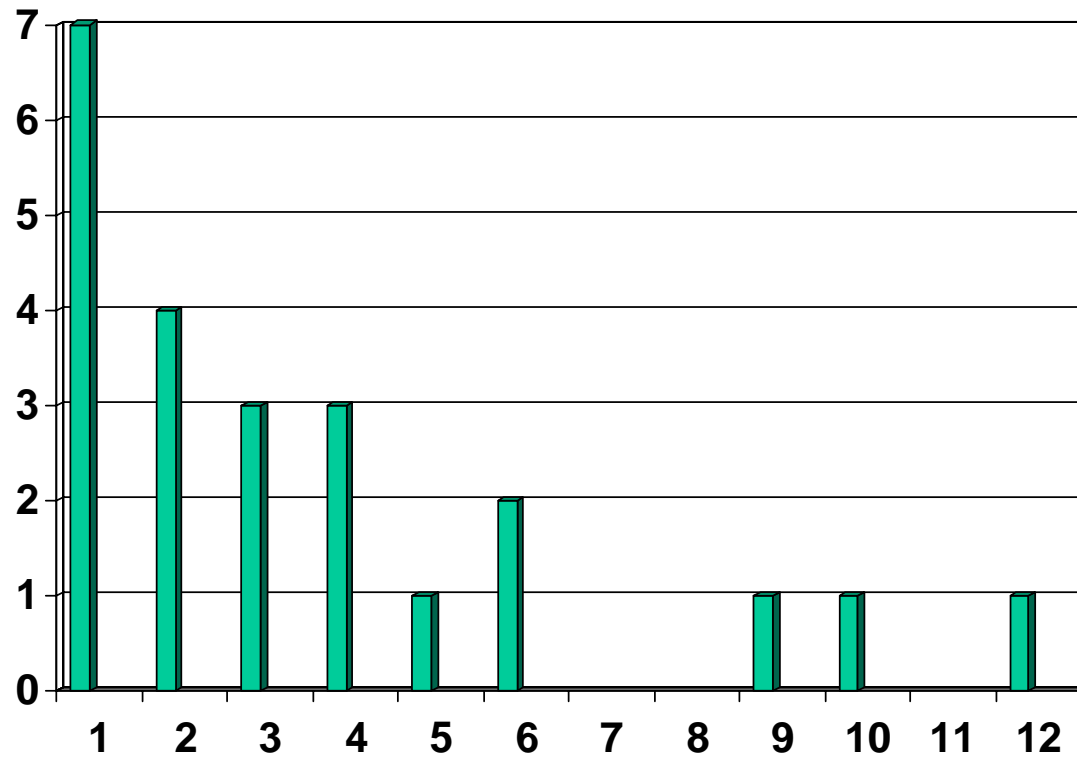


Name and unit

- **Name** 93 replies
– 2 Anon, 1unit under Appeal,
- **Unit** 26units,



Units



Prepared for SCTS by SCTS GB&I Ltd.



Q1 Speciality

- Adult cardiac surgery
 - 42 Pure cardiac, 24 Cardiac & Thoracic
- Paediatric cardiac surgery
 - 2 pure paed, 6 cardiac and paed
- Thoracic surgery
 - 18 pure thoracic



On-call

- On-call
 - 14 receive less than 1 PA
 - 43 = 1PA
 - 12 = between 1 and 2 PAs
 - 12 = 2 or more PAs



Total PAs

- Mean Total PAs - 12.00 PAs,
 - 2 indiv have 10 PAs
 - 10 indiv have 11 PAs,
 - 56 indiv have 12 PAs,
 - 16 indiv have > 12 PAs.



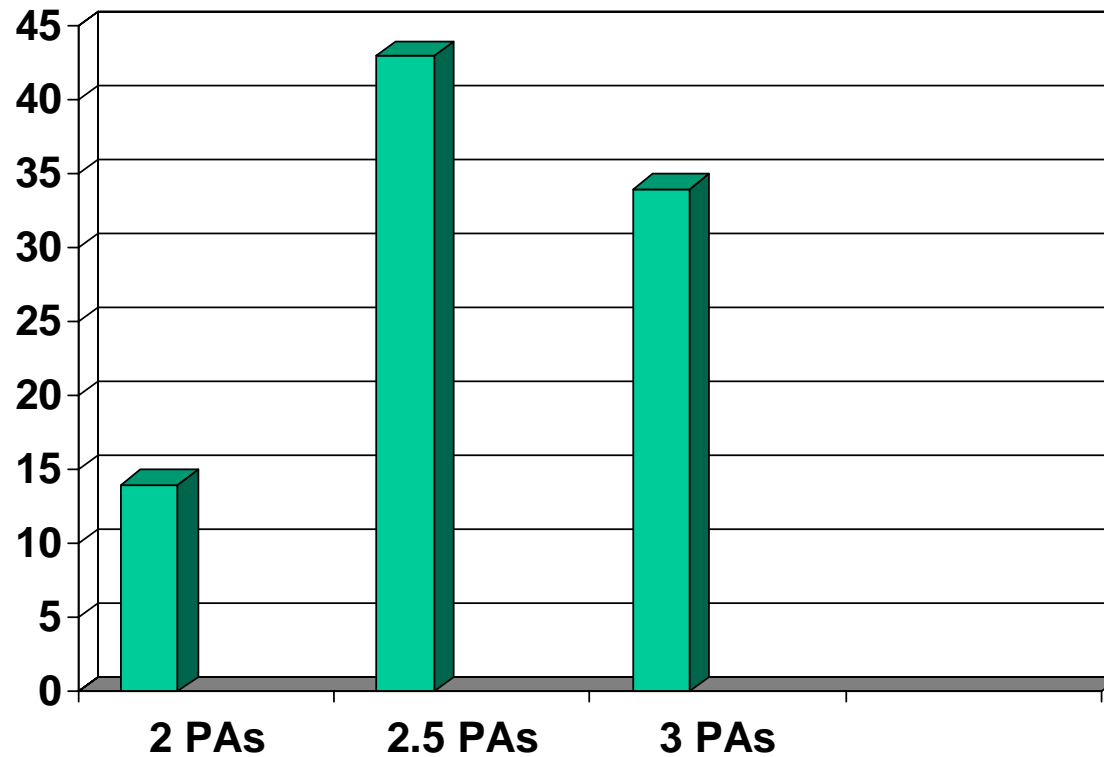
Operating time (half days)

- Thoracic
 - Mean = 3
- Cardiothoracic
 - Mean = 4.3
- Cardiac
 - Mean = 4.1



PAAs per all day list

2.5 PAs is SCTS guideline





75 : 25 split

- Yes 56 No 25
- Some units only applied this rule to 1st 10 PAs



Cross cover in contract

- 55 surgeons no contractual cross cover
- 14 surgeons contractual cross cover
 - 1 PA most common
 - Difficult assess PAs, some hard deals made by Mx



Reduce PAs

- General feeling was if it is not already happening it soon will
- Pressure on 75:25 split



What now?

- Number of cases is public knowledge
- NHS Management workload review underway
- Powerful information to show value of other specialities
- The money saved will not go into new jobs!
- Protect time for CME, Audit, Revalidation and increased clinical work as MMC takes hold